



# THE JACK SAVELL MEMORIAL NATURE RESERVE



## A Summary of KFA

Kinderplatz of Fine Arts, a premier preschool in Fort Worth, was founded in 1979, with just seven students, ages four and five. Today, more than 120 students, ages two to six, attend Kinderplatz each year.

Kinderplatz utilizes the arts as a creative approach to whole child learning. We provide an environment that strengthens social and emotional intelligence and helps students achieve a mastery of academic and problem-solving skills, all of which lay a strong foundation for future success.

Exploration in nature is an important piece of our curriculum. Having a Nature Explore certified classroom in our gardens for the past 10 years has ignited our love of learning outdoors. Outdoor learning activates the whole brain, uses all five senses, inspires creativity, attention span and improves mental and physical health.

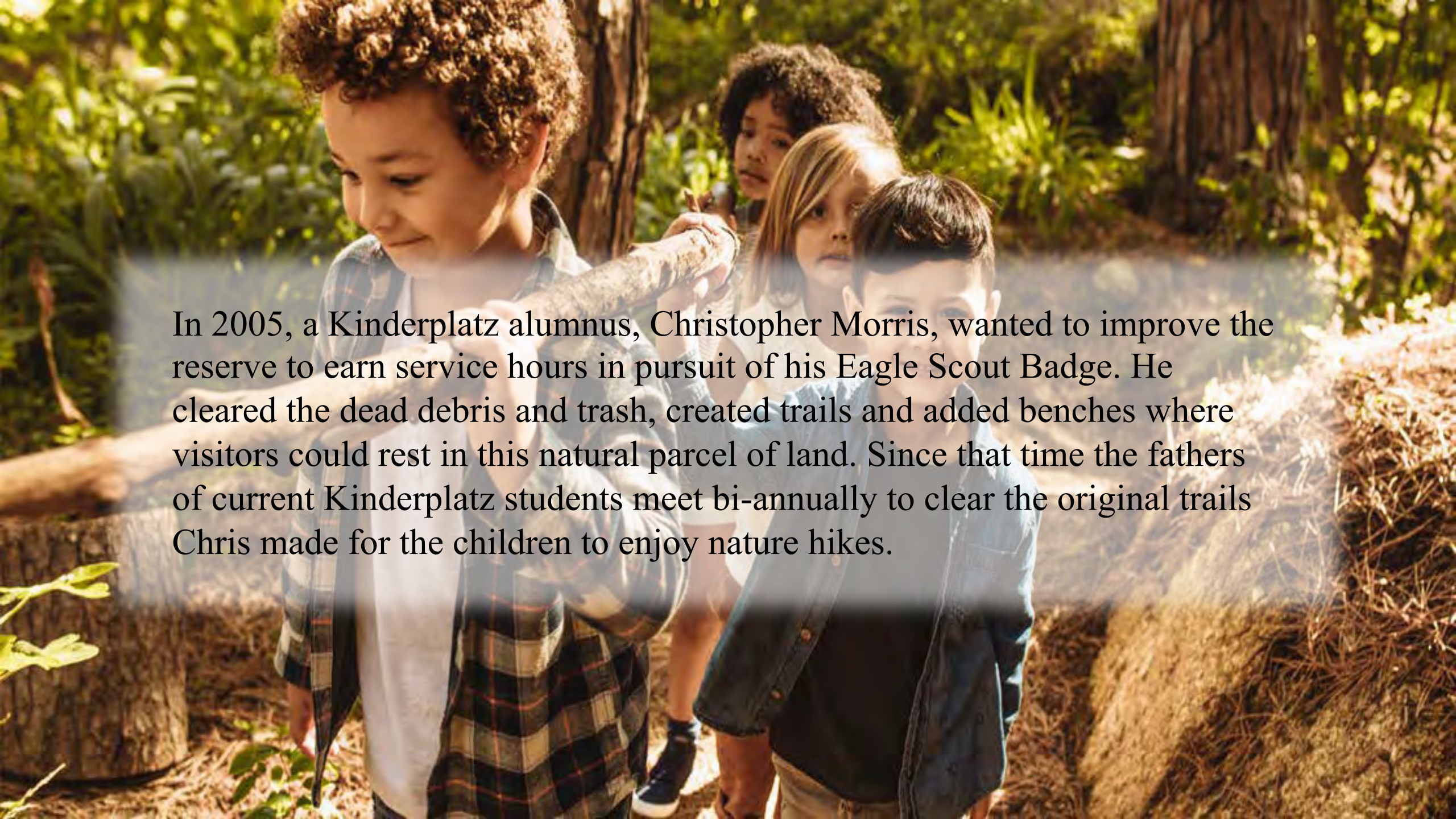


A family of four is walking along a dirt path in a forest. The father, on the right, is wearing a blue jacket and jeans. The mother, in the center, is wearing a pink beanie, a grey sweater, and a pink jacket. They have two children: a girl on the left in a yellow raincoat and yellow boots, and a boy in the middle wearing a red jacket and black boots. The path is covered with fallen leaves, and the background is filled with trees and foliage.

## The Story...

In the year 1999, a generous donor gave Kinderplatz of Fine Arts two parcels of land—one of which our school occupies today. The other parcel is home to our undeveloped nature reserve where we plan to take what we have been doing successfully for over 40 years within our walls to the outdoors!





In 2005, a Kinderplatz alumnus, Christopher Morris, wanted to improve the reserve to earn service hours in pursuit of his Eagle Scout Badge. He cleared the dead debris and trash, created trails and added benches where visitors could rest in this natural parcel of land. Since that time the fathers of current Kinderplatz students meet bi-annually to clear the original trails Chris made for the children to enjoy nature hikes.





In 2015, a group of parents, teachers and interested parties met with Nature Explore consultants to brainstorm what we might do with the land. That brainstorming led to a conceptual plan.

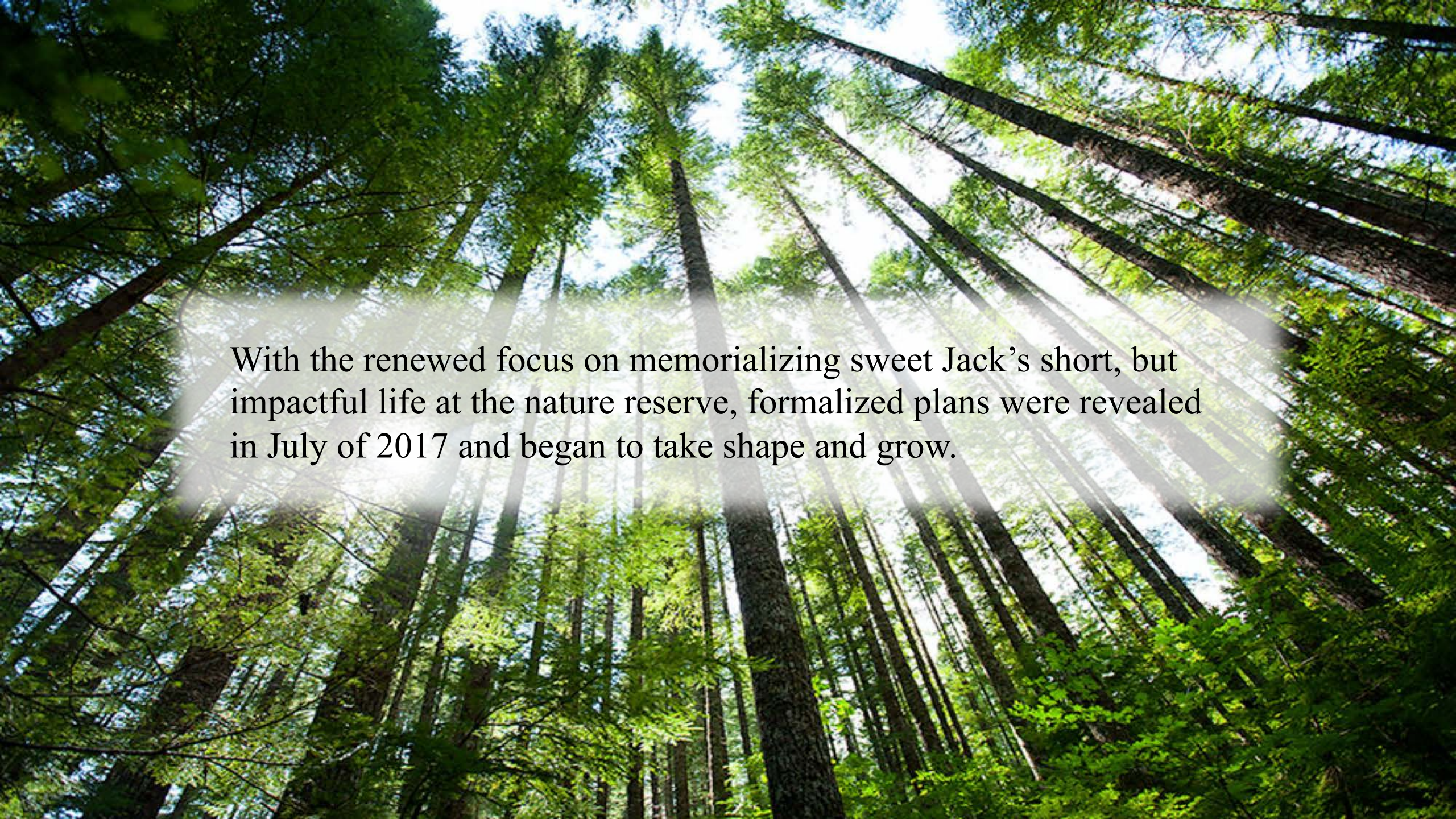






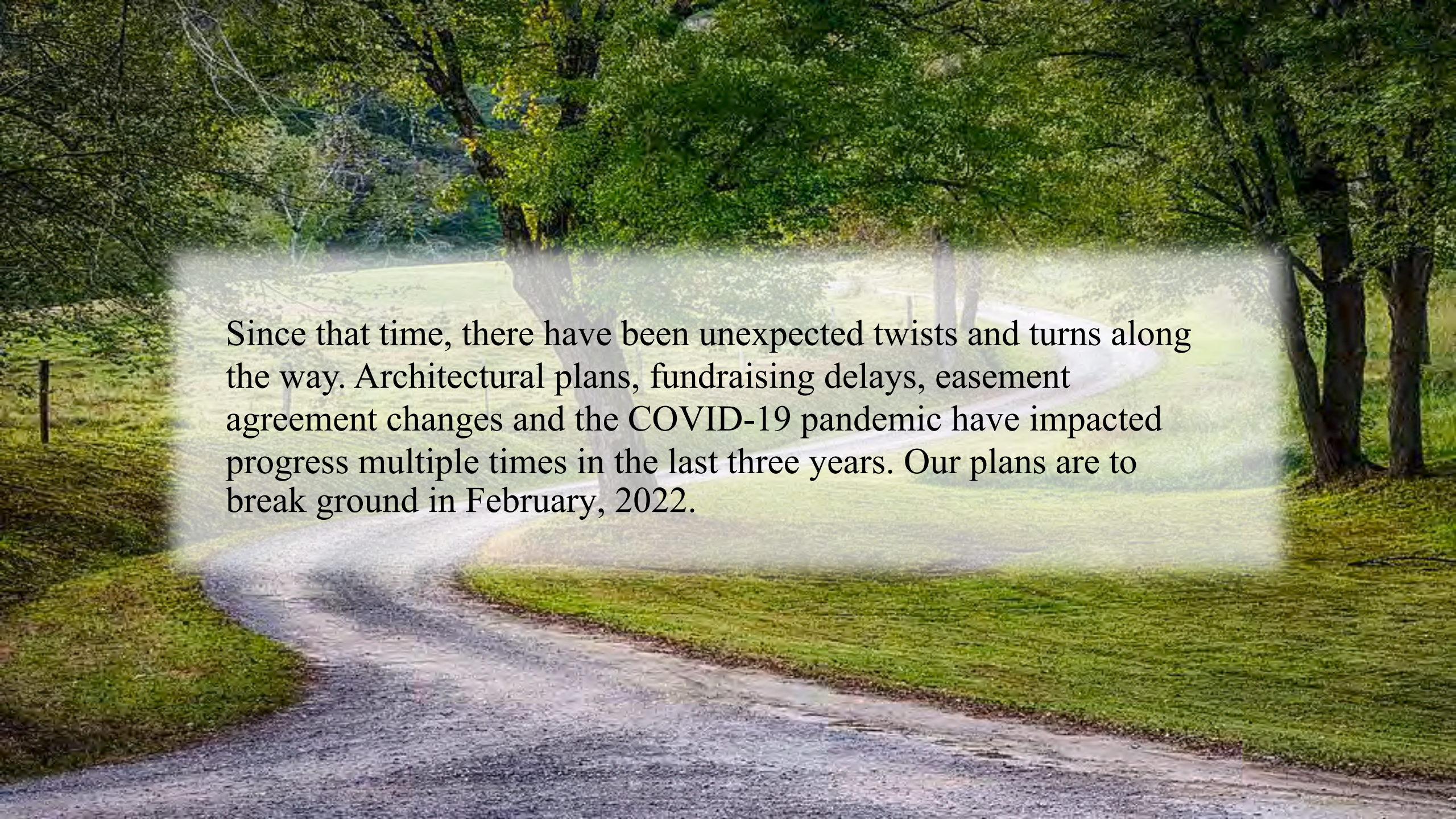
On May 31, 2017 our precious KFA student, Jack Savell, lost his life to epilepsy at the age of five. As we grieved this loss with his parents, Kaci and Jonathan Savell, KFA families came forward asking if we might be able to do something to honor Jack at the nature reserve.





With the renewed focus on memorializing sweet Jack's short, but impactful life at the nature reserve, formalized plans were revealed in July of 2017 and began to take shape and grow.



A scenic photograph of a gravel path leading through a lush green landscape. The path is in the foreground, curving slightly to the right. It is flanked by vibrant green grass. In the background, there are several large, leafy trees with dense green foliage. A soft, white mist or fog hangs in the air, partially obscuring the trees and creating a serene, ethereal atmosphere. The lighting is soft, suggesting a morning or late afternoon setting.

Since that time, there have been unexpected twists and turns along the way. Architectural plans, fundraising delays, easement agreement changes and the COVID-19 pandemic have impacted progress multiple times in the last three years. Our plans are to break ground in February, 2022.



A group of approximately ten children are running through a lush green field, holding hands in a line. They are dressed in casual summer clothing like t-shirts and shorts. The background is filled with tall grass and a dense line of trees with green and yellowing leaves, suggesting a park or natural reserve setting. The overall atmosphere is bright and cheerful.

## **PROUDLY ANNOUNCING**

### **The Jack Savell Memorial Nature Reserve**

#### **Mission:**

To extend our love of the arts and the rich lessons in nature to include the great outdoors and surrounding community. We believe the nature reserve program will be a valuable asset for educating the next generation of stewards of the earth—Fort Worth's future citizens.

#### **Vision:**

To shift the overuse of technology and screen time to a love of nature and stewardship for our great earth. We have joined with the Blue Zones Project to improve the mental and physical health and well being of our community, now and in the future, through informative educational programs and volunteer efforts.

### **ESTABLISHED 2021**





# THE JACK SAVELL MEMORIAL NATURE RESERVE

## *Outdoor Classroom and Picnic Pavilion*







# THE JACK SAVELL MEMORIAL NATURE RESERVE

## *Pavilion, Office and Restroom*



EAST ELEVATION



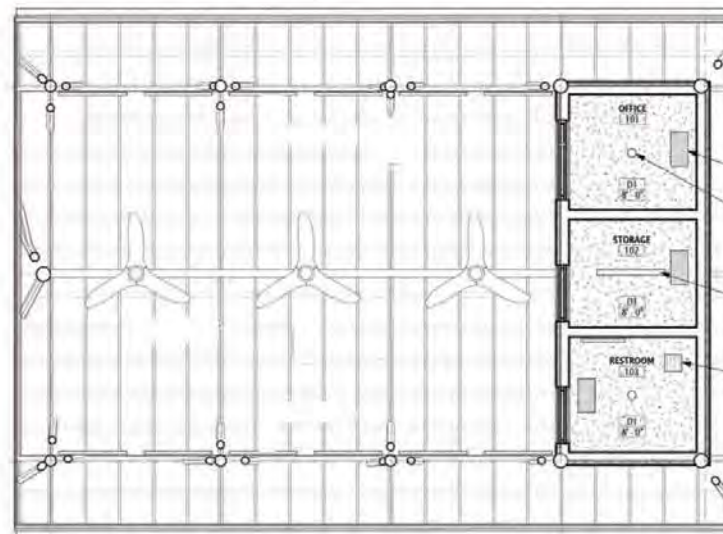
NORTH ELEVATION



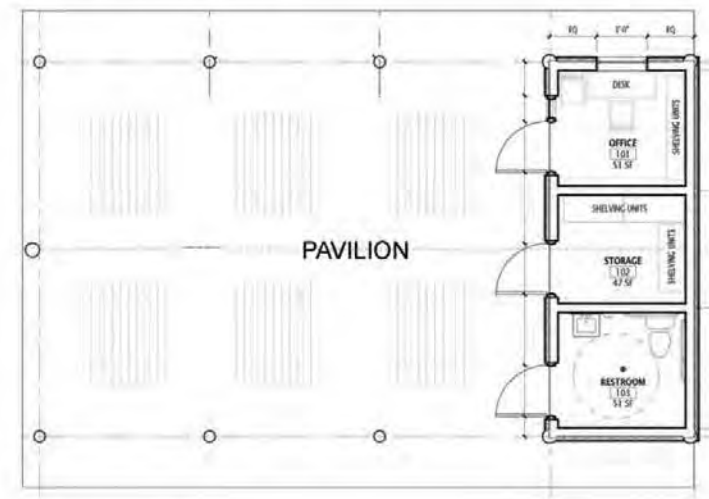
WEST ELEVATION



SOUTH ELEVATION



REFLECTED CEILING PLAN



FLOOR PLAN





# THE JACK SAVELL MEMORIAL NATURE RESERVE

## *Plant Selections*



American Beauty Berry



Autumn Sage



Oakleaf Hydrangea



Giant Turk's Cap



Little Bunny Fountain Grass



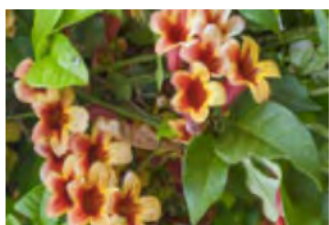
Pink Penstemon



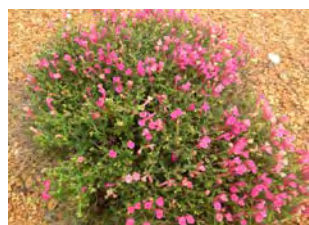
Texas Sedge



Evergreen Sumac



Crossvine



Texas Rock Rose



American Sycamore



Mexican Heather



Henry's Garnet Spire



Fragrant Sumac



Thornless Honey Locust



Texas Redbud



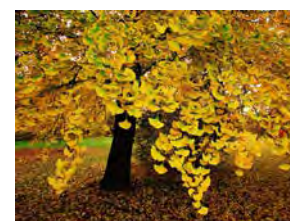
Drummond Red Maple



Bur Oak



Dura Heat River Birch



Ginkgo



Rough Leaf Dogwood

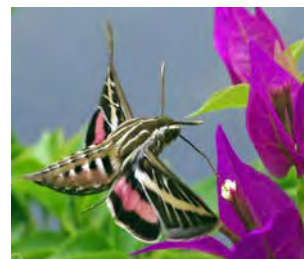
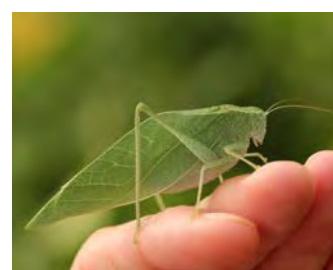
*Careful consideration to seasonal changes, as well as appeal to all five senses went into planning plant selections.*





# THE JACK SAVELL MEMORIAL NATURE RESERVE

## *Interchangeable Education & Health Benefits Boards*



*Trinity River wildlife, reptiles, insects, butterflies, waterfowl, birds of prey, wildflowers, trees...*





# THE JACK SAVELL MEMORIAL NATURE RESERVE

## *Aerial Map*





## Kinderplatz of Fine Arts and The Jack Savell Memorial Nature Reserve Certification Achievements:

**Certified Nature Explore Classrooms** are dynamic, nature-based play and learning spaces where research-based, field-tested design principles create nature-rich outdoor spaces.

**The Blue Zones Project** is a community-led, well-being initiative designed to make healthy choices easier for communities across the United States through permanent changes to environment, policy and social networks. Small changes add up to huge benefits for the community: better mental and physical health, lowered healthcare costs, improved productivity, and ultimately, a higher quality of life.

**TxN Certification** provides Texas employers, organizations, and individuals with recognition of meaningful conservation efforts involving and benefitting people, prosperity, and natural resources. Texan by Nature inspires that can-do spirit to take care of the land, water, and wildlife that sustain our state's people and lead to prosperity.





A person and a child are jumping joyfully on a dirt path in a sun-dappled forest. The person, wearing a backpack, is in the foreground with arms raised. The child, also with a backpack, is jumping slightly behind them. The background is filled with lush green trees and foliage, with sunlight filtering through the canopy.

## **The Jack Savell Nature Reserve will include:**

Storytelling Area

Covered Picnic Pavilion

Restroom Facilities & Office

Amphitheater

Imaginary Trinity River

Discovery Boards/Meandering Pathways

Educational Boards

Jack Savell Memorial Bench

Bird Blind

Fairy House & Fort Building Area

Nature Art Pavilion

Dirt Digging Area

Handicap Accessible Nature Trails

Quaint Bridges

Labyrinth Maze

Remembrance Pathway



A family of four is hiking on a dirt trail through a lush green forest. In the foreground, a young boy in a white t-shirt and green shorts is running towards the camera, carrying a green and white cooler. Behind him, a girl in a blue plaid shirt and blue shorts is walking. Further back, a man in a grey t-shirt and khaki shorts is walking, and a woman in a blue denim shirt and red scarf is walking. The forest is dense with green foliage and large trees.

The Jack Savell Memorial Nature Reserve will be a valuable asset to the entire Fort Worth community, and we need your support to make it a reality.

For more information about future programs and naming opportunities, please visit: [www.kinderplatz.org/nature-reserve](http://www.kinderplatz.org/nature-reserve) or contact Paula McMillen Williamson, The Jack Savell Memorial Nature Reserve Founder, at [pmcmillen@kinderplatz.org](mailto:pmcmillen@kinderplatz.org).



# Kinderplatz of Fine Arts Board of Directors

## Officers:

Stanley Eisenman, President  
Nissa Harrington, Secretary

Sara Murphy, Vice President  
Lane Odom, Treasurer

## Directors:

Shelly Flores  
Christine Gores  
Reagan Horton  
Amanda Lewis  
Beth Rodzinski  
Kaci Savell, KPO President  
Lori Sturman  
Beth Welch  
Jason Zook

## School Administration:

Karen Bennett, Executive Director  
Celeste Malicoate, Administrative Director  
Dana Ritchie, Financial Director  
Sue Crawford, Director of Afternoon Programs  
and Professional Development

2701 Riverglen Drive, Fort Worth, Texas 76109  
817-207-0660  
501(c)3 Non-profit Organization